

# ACDC Touch Studio User Guide

V1.2

---

## Contents

1. Introduce .....	3
2. Installation.....	4
3. Bootloader or Firmware Update .....	6
4. Touch Device Identify.....	9
5. Beep Setting.....	10
6. Double Left Click Setting .....	11
7. Multi Monitor Mapping .....	12
7.1 Multi-touch Mode Mapping.....	12
7.2 Mouse Mode Mapping .....	13
8. Touch Direction Setting .....	14
9. Touch Mode Switching.....	15
10. Left Click Setting .....	16
11. Right Click Setting.....	17
11.1 Mouse Right Click .....	17
11.2 Mouse Right Click .....	17
12. Other Feature Setting .....	19
13. Device Information .....	20
14. Version Information.....	21

---

## 1. Introduce

ACDC Touch Studio is a utility tool, you can use it to simply and conveniently set up some functions, such as switching the mouse and multi-touch mode, beeping when touching, etc.

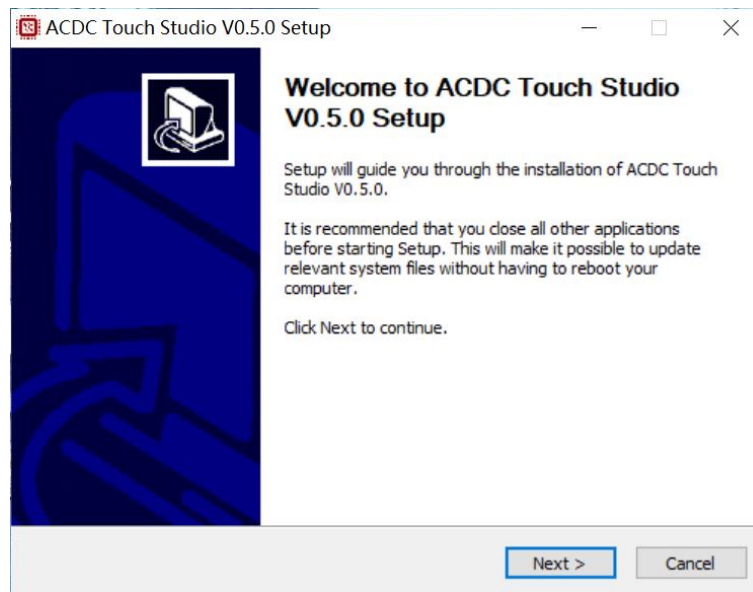
If the system you are using is Windows 8 or above, all functions of the tool can be fully supported. If your system is Windows 7 SP1, you need to manually install the KB3033929 Windows Update first. Windows 7 or below systems will not support full functionality.

---

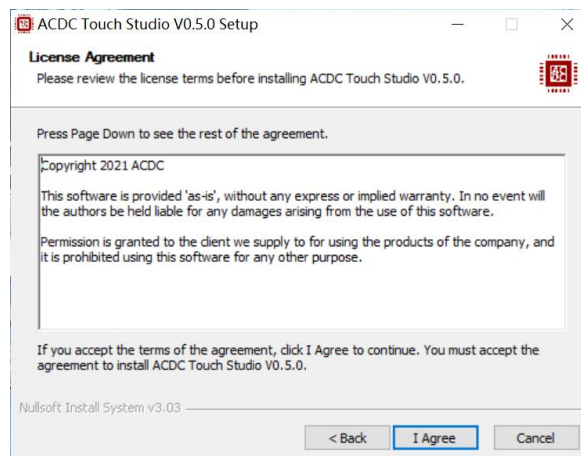
## 2. Installation

If your system is Windows 7 SP1, you need to manually install the KB3033929 Windows Update first. Open the KB3033929 Windows Update installation package, if it is prompted that it has been installed, you can directly install ACDC Touch Studio, if it is not installed, it will be installed. After the installation is complete, you need to reboot before you can continue to install ACDC Touch Studio.

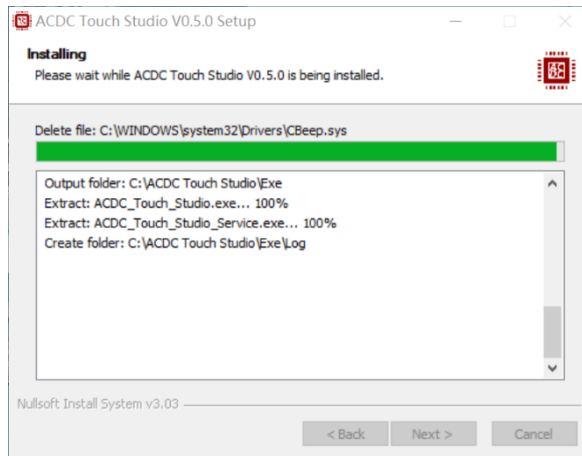
Double click on the ACDC Touch Studio installer to install.



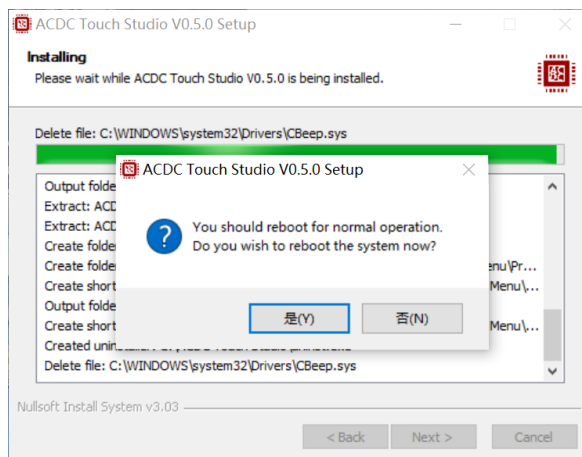
Click "Next" to continue the installation.



Click "I Agree" to continue the installation.



After the installation is complete, the system needs to be restarted to enable some functions to operate normally. We strongly recommend that you click "Yes" to restart the system.

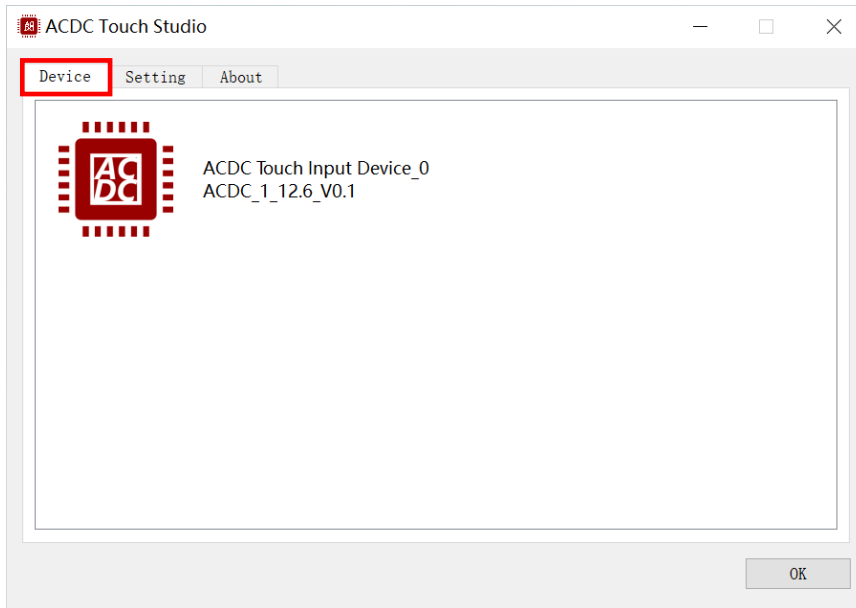


When ACDC Touch Studio is installed, you can check whether the driver is installed correctly in the device manager (not in Mouse Descriptor mode)

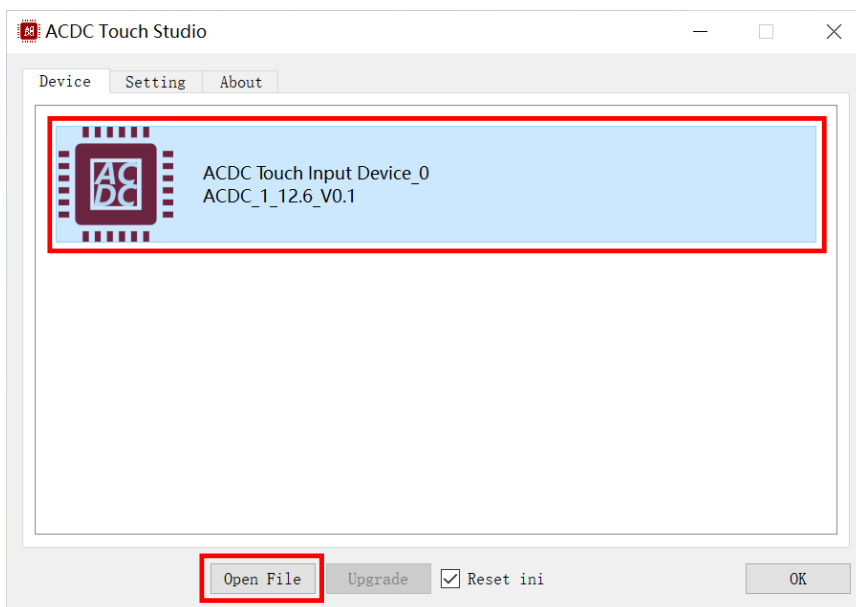
---

### 3. Bootloader or Firmware Update

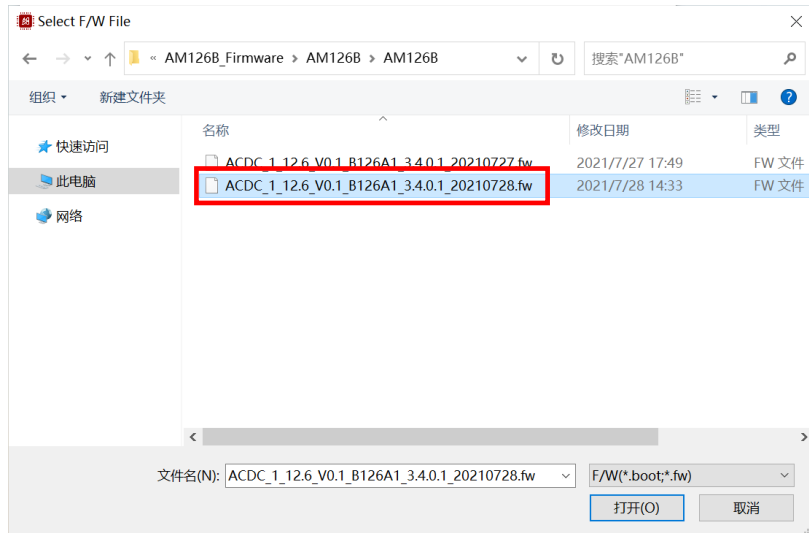
ACDC Touch Studio support bootloader and firmware update, only support updating via USB interface now. Open Touch Studio, click the “Device” area 5 times to show the function of the upgrade.



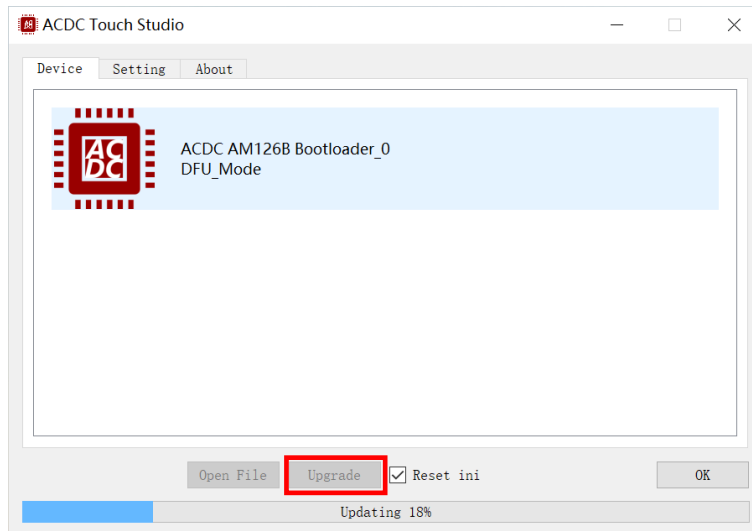
Click the device icon to select the device you want to upgrade, click the “Open File” button to select the bootloader or firmware file.



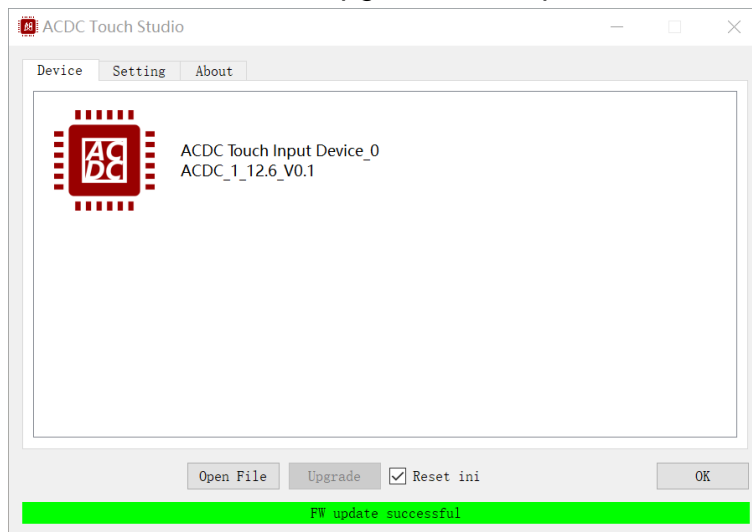
Select the file to upgrade.



After selecting File, click the “Upgrade” button to start upgrade and it will show upgrade progress.

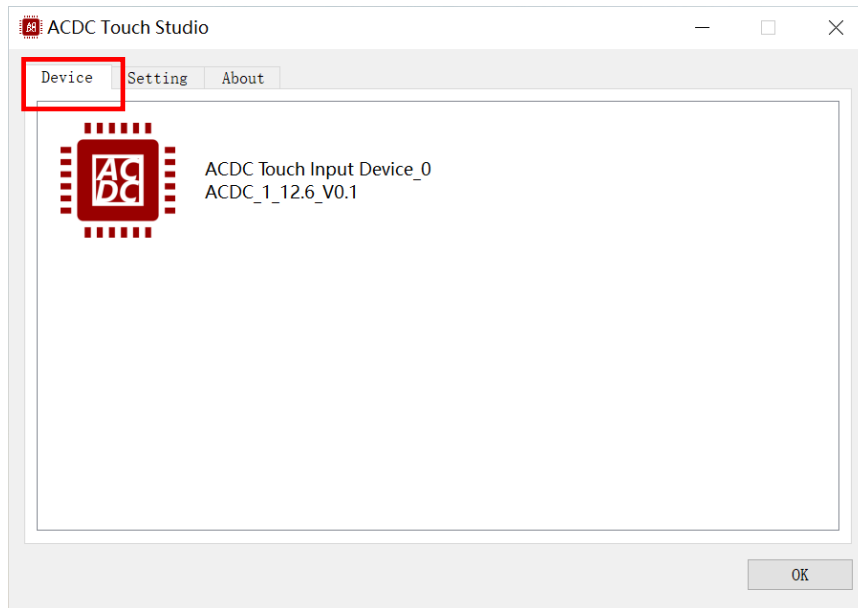


When the progress reaches 100%, the upgrade is completed.



---

Click the “Device” area 5 times to hide the function of the upgrade to prevent mis-operation.

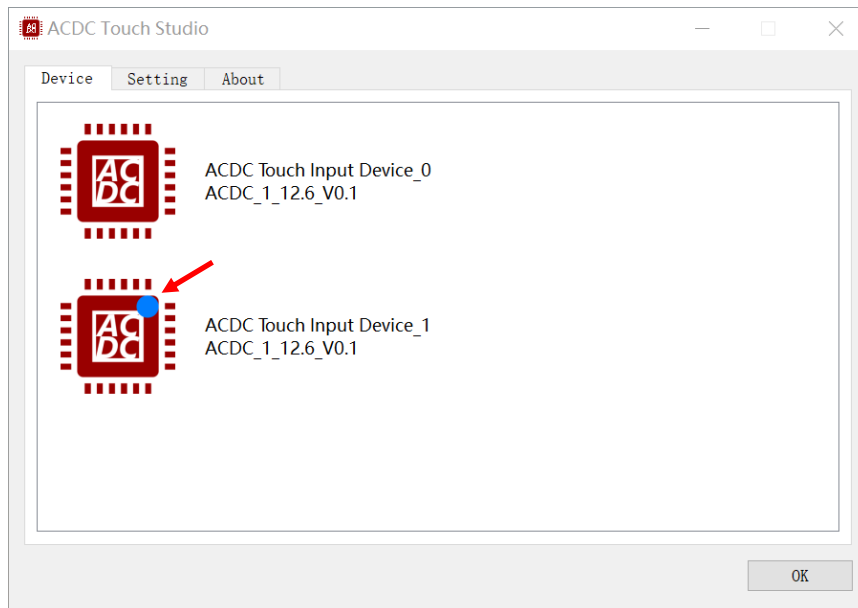




---

## 4. Touch Device Identify

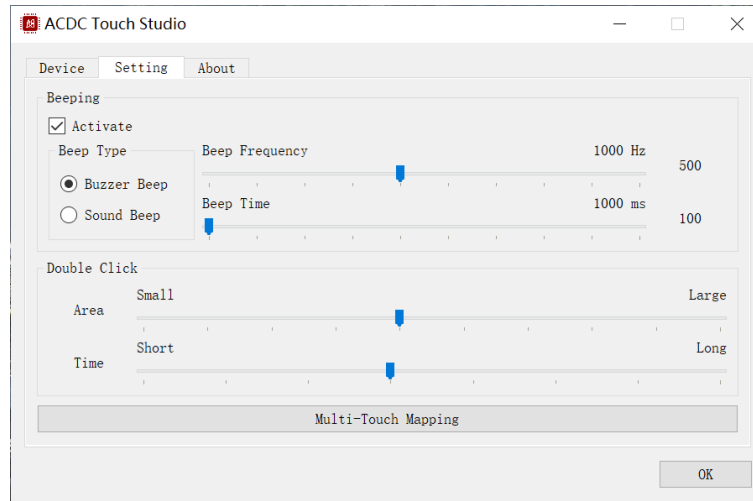
When using multiple touch devices, the current touched device can be identified under the interface of the “Device”. A small circle will appear in the upper right corner of the icon of the corresponding device, indicating that the device is touching.



---

## 5. Beep Setting

Beep can be set under “Setting” tab.

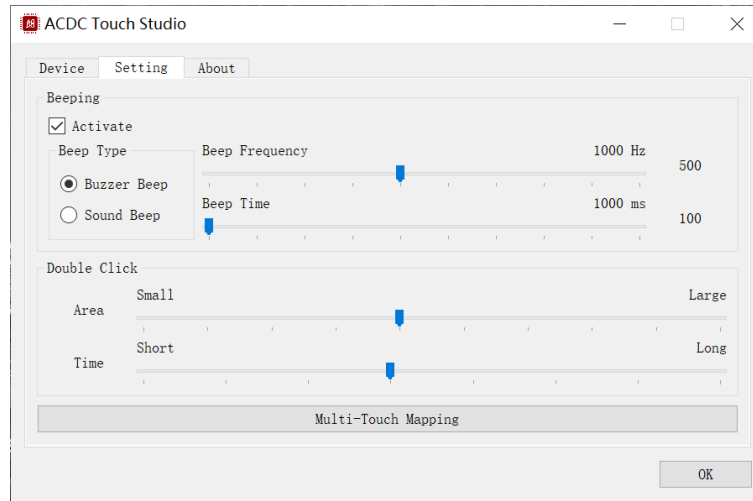


- **Activate**  
Check: enable touch beep.  
Uncheck: Disable touch beep.
- **Buzzer Beep**  
Use the buzzer on the motherboard to beep. Need a buzzer on the motherboard to support this function. The frequency and time of the beep can be set.
- **Sound Beep**  
Use sound card to beep. The frequency and time of the beep cannot be set.

---

## 6. Double Left Click Setting

Double left click can be set under “Setting” tab.



Area: Adjust the range between the first and second clicks for a double click.

Time: Adjust the time interval between the first and second clicks for a double click

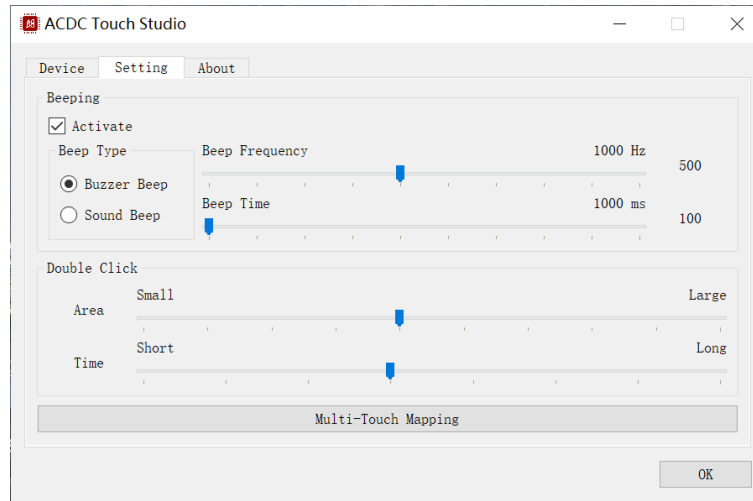
If the icon is difficult to open when double-click, it may need to increase the rang of this part. The settings in this part are not related to ACDC Touch Studio or FW, there are determined by the system.

---

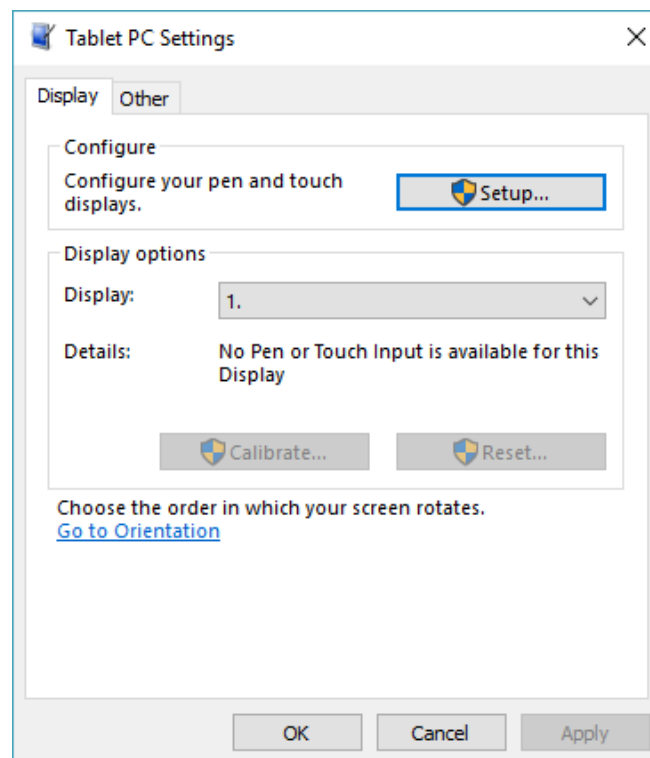
## 7. Multi Monitor Mapping

### 7.1 Multi-touch Mode Mapping

Multi-touch mapping can be set under “Setting” tab.



Click the “Multi-Touch Mapping” button and the “Tablet PC Settings” window will be displayed.



---

Click the “Setup...” button to start the multi monitor mapping program. According to the prompt, press Enter to switch between different screens. Then touch the touch panel on the screen you want to touch, touch will be fixed on that screen.

Touch this screen to identify it as the touchscreen.

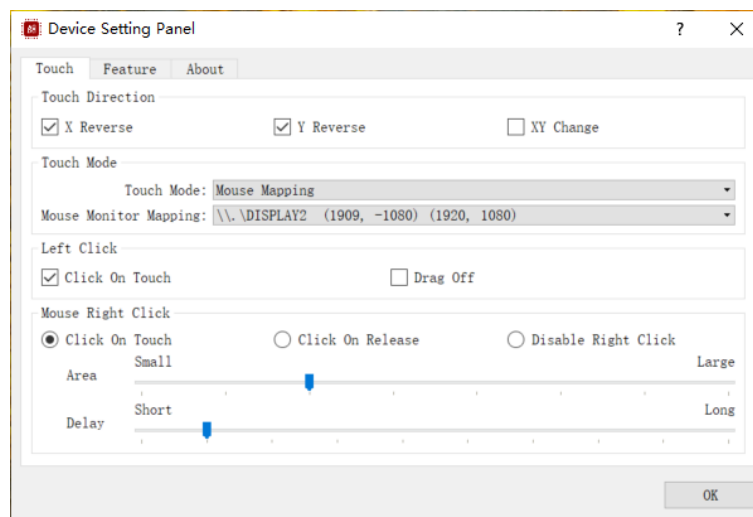
If this is not the Tablet PC screen, press Enter to move to the next screen. To close the tool, press Esc.

When setting is complete, multi monitor mapping program will exit automatically

## 7.2 Mouse Mode Mapping

The mapping of the mouse mode needs to be set under the corresponding touch device.

Double-click the touch device you want to set up to enter the device settings panel

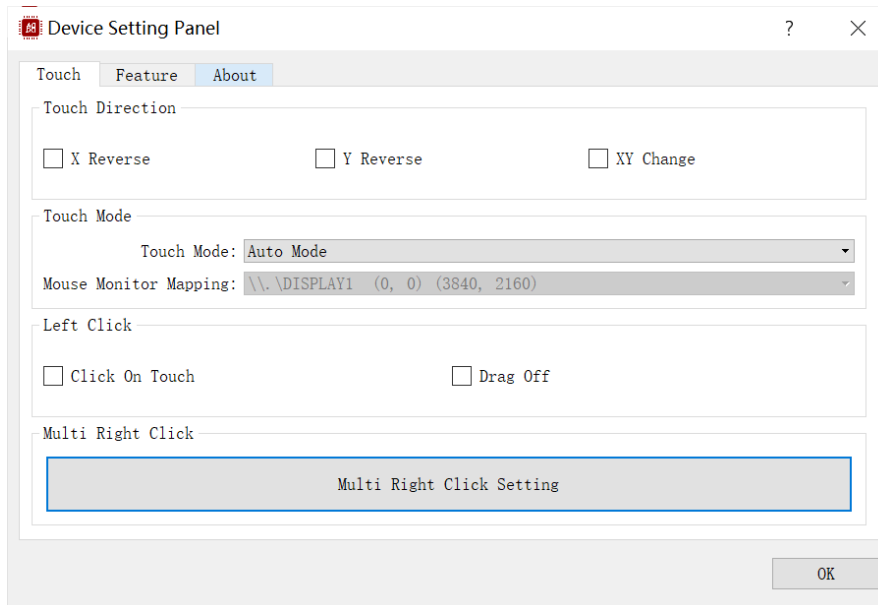


Select “Mouse Mapping” in the “Touch Mode” list, then select the monitor you want to map in the “Mouse Monitor Mapping” list, click the OK button to map the mouse.

---

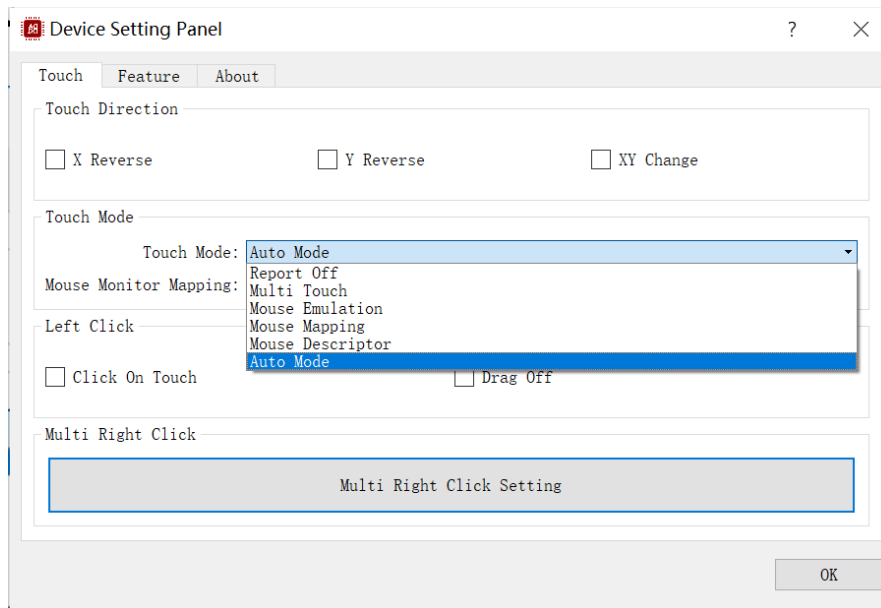
## 8. Touch Direction Setting

Double-click to open the corresponding device. Touch direction can be set under the “Touch” tab.



- X Reverse  
Set the X axis coordinate direction.
- Y Reverse  
Set the Y axis coordinate direction.
- X Y Change  
X axis and Y axis coordinate interchange.

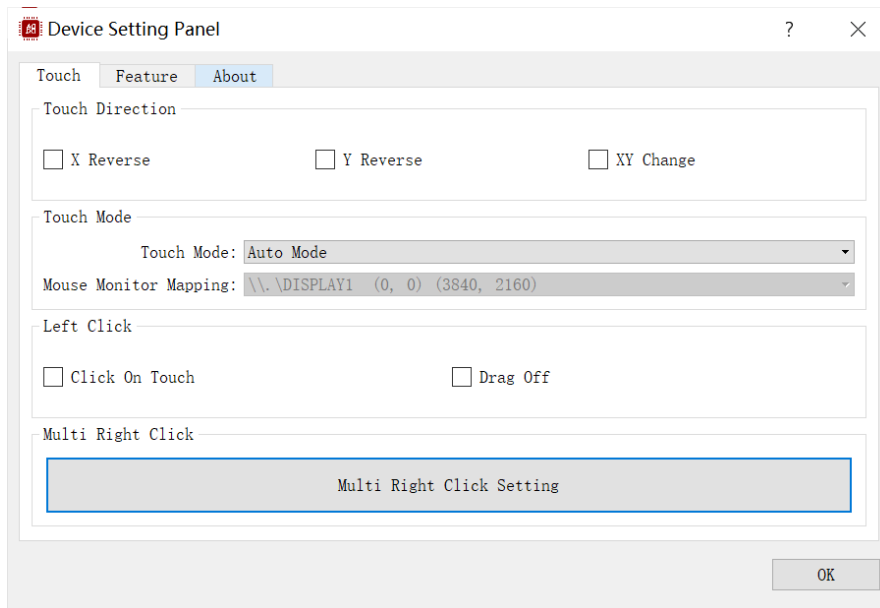
## 9. Touch Mode Switching



- **Report off**  
Turn off device touch functionality.
- **Multi Touch**  
Touch works as multi-touch mode.
- **Mouse Emulation**  
Touch works as Emulation mode.
- **Mouse Mapping**  
It can be used when a second monitor is connected and used in mouse touch mode.
- **Mouse Descriptor**  
Touch works as Mouse Descriptor mode.
- **Auto**  
It operates automatically with the mode set in the firmware.

---

## 10. Left Click Setting



- Click on Touch  
Left click on touch.
- Drag Off  
Disable drag function.

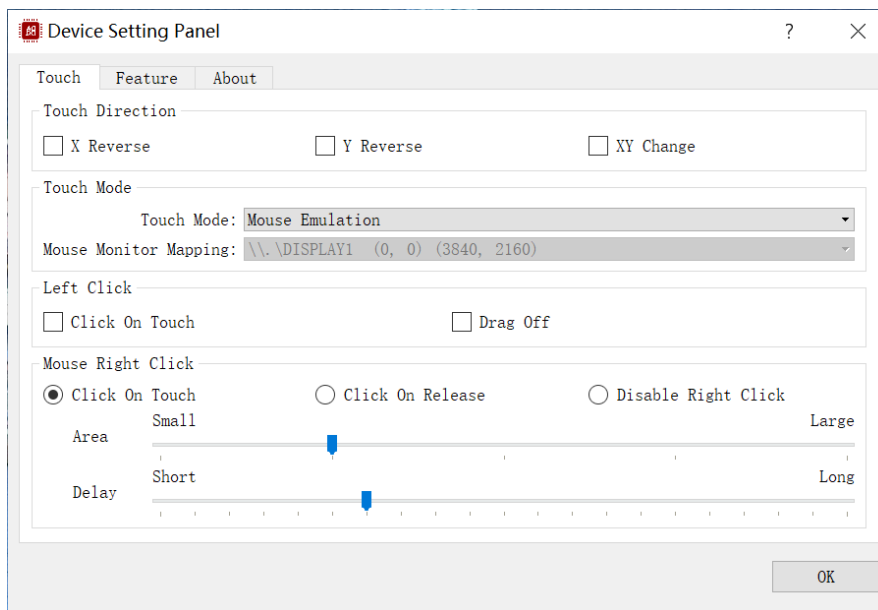


---

## 11. Right Click Setting

ACDC Touch Studio will automatically display Mouse Right Click or Multi Right Click according to whether you are currently using multi-touch mode or mouse mode

### 11.1 Mouse Right Click



- Right Click

Click on Touch: right click on touch.

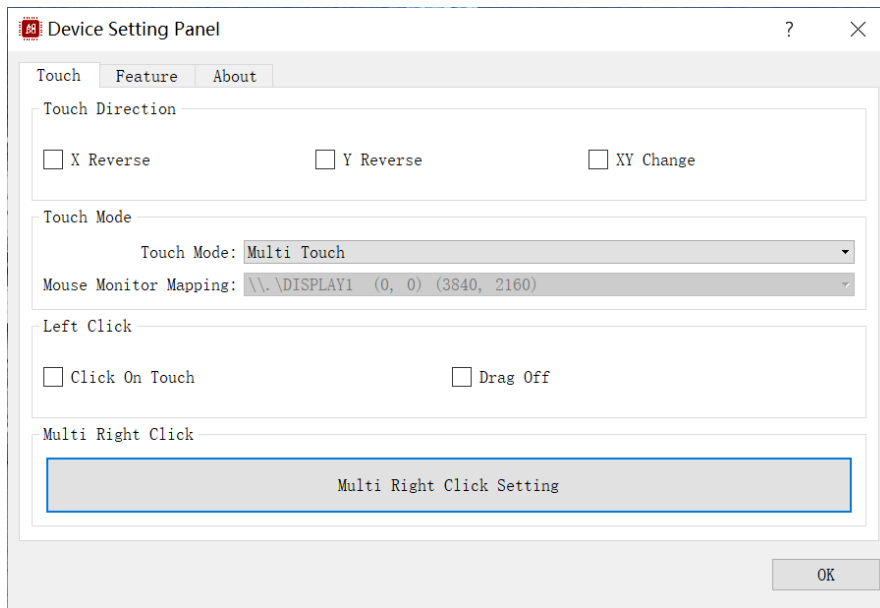
Click on Release: right click on release.

Disable Right Click: disable right click.

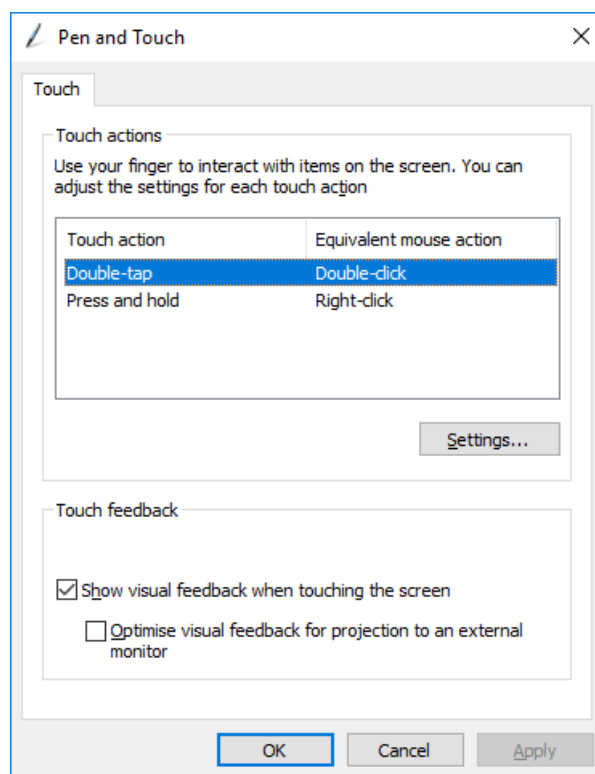
Area: set the right click area.

Delay: set the right click time.

### 11.2 Mouse Right Click



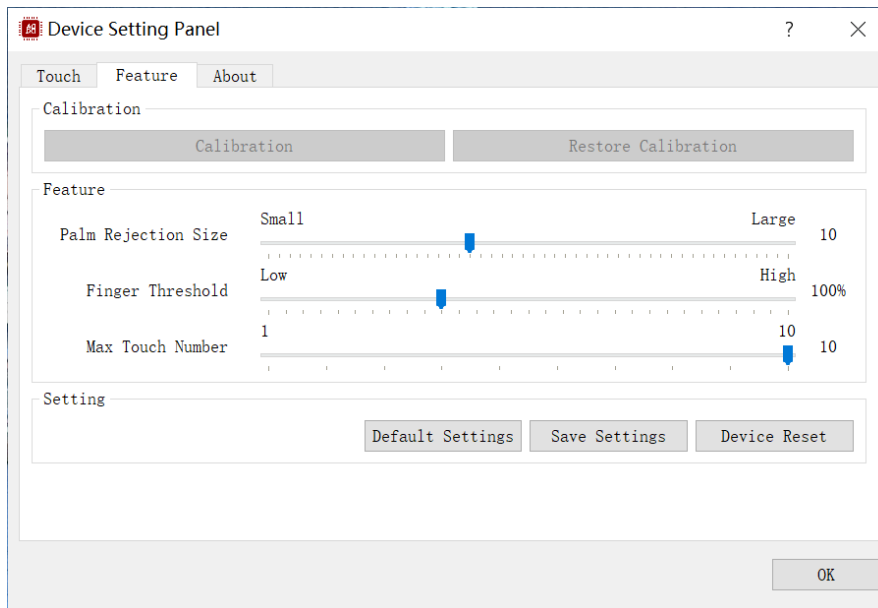
Click the “Multi Right Click Setting” button to pop up the right-click setting of the multi-touch mode.



The click function of the multi-touch mode can be set through this window. This function is supported by the operating system and has nothing to do with ACDC Touch Studio.

---

## 12. Other Feature Setting

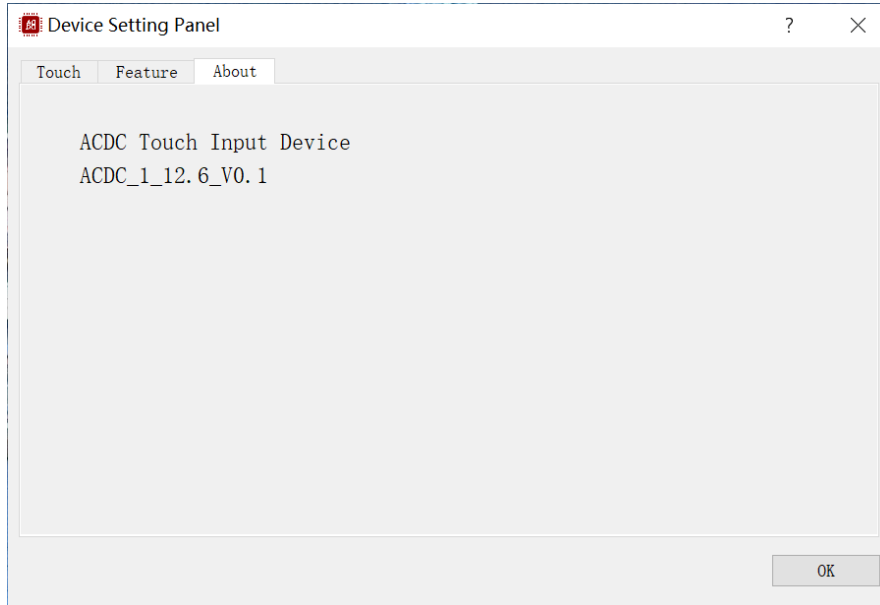


- **Palm Rejection Size**  
Ignore the touch of a large area.
- **Finger Threshold**  
Increase this value will reduce sensitivity, decrease this value will increase sensitivity.
- **Max Touch Number**  
Set the number of touch points.
- **Default Settings**  
It can set as the setting value of the original firmware.
- **Save Settings**  
It can save the changed setting value to device.
- **Device Reset**  
It can reset the device.

---

## 13. Device Information

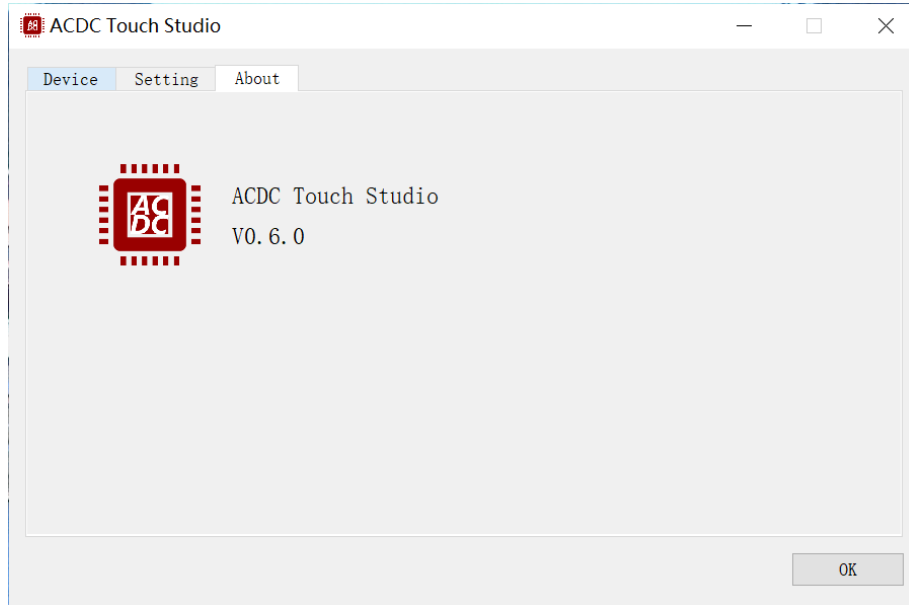
You can check the firmware version of the touch device.



---

## 14. Version Information

You can check the ACDC Touch Studio version.



---

# THANK YOU



## Contact Point

✓ FAE Team

**E-mail:** [FAE@advancustom.com](mailto:FAE@advancustom.com)